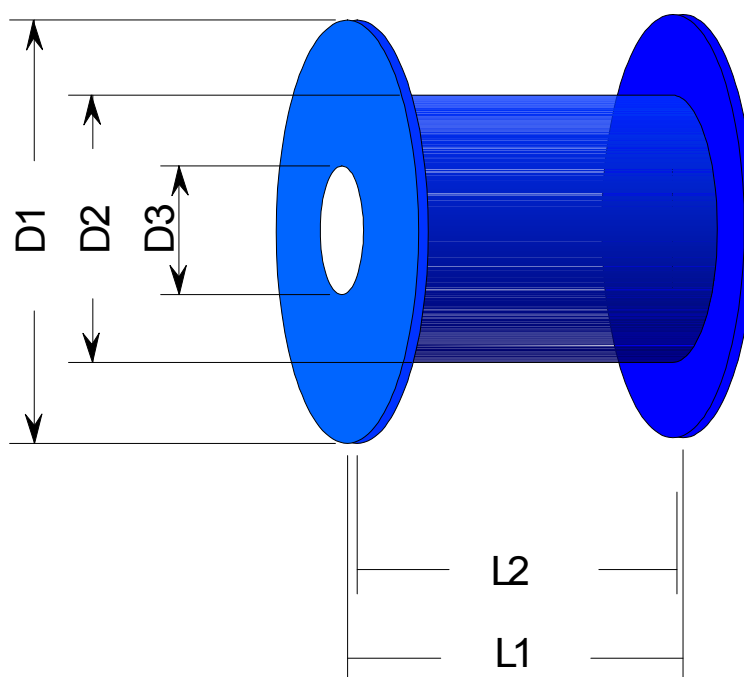


Appendix A: Reel sizes



REEL	Weight t [gr]	Label	D1 [mm]	D2 [mm]	D3 [mm]	L1 [mm]	L2 [mm]
0,1 kg. DIN	8	30	39,0	21,0	9,0	44,0	38,0
0,1 kg. Periplast	5	45	53,5	27,0	25,0	18,0	16,0
0,25 kg. Periplast	9	45	49,0	18,3	15,2	37,0	33,0
0,5 kg. DIN	26	60	63,0	37,0	11,0	63,0	49,0
0,5 kg. Periplast	18	60	69,0	32,7	29,8	44,0	34,0
1 kg. DIN	42	60	80,0	50,0	16,0	80,0	64,0
1 kg. Periplast	26	60	69,0	32,7	29,8	77,0	67,3
2,5 kg. DIN	75	85	100,0	50,0	16,0	100,0	80,0
2,5 kg. Ampra	45	85	94,0	33,0	29,5	91,0	87,0
5 kg. DIN	150	85	125,0	80,0	16,0	125,0	100,0
10 kg. DIN	255	85	160,0	100,0	22,0	160,0	128,0
12 kg. DIN	410	60	370,0	311,0	305,0	80,0	70,0
20 kg. DIN	640	60	300,0	212,0	51,0	103,0	91,0